

Spare parts list

Hydraulic power packs

	Valid from serial number
LP 9-20 P PAC (EU)	BGF0002671
LP 9-20 P PAC	BGF0002671
LP 9-20 E PAC	BGF0002671



Contents

General information.....	5
Spare parts list.....	6
Frame and cowl LP 9-20 P PAC.....	6
Frame and cowl LP 9-20 E PAC.....	8
Tank and chassi.....	10
Engine and pump LP 9-20 P PAC.....	12
Engine and pump LP 9-20 E PAC.....	14
Valve block LP 9-20 P PAC.....	16
Valve block LP 9-20 E PAC.....	18
Cylinder LP 9-20 P PAC.....	20
Hoses and fittings LP 9-20 P PAC.....	22
Hoses and fittings LP 9-20 E PAC.....	24
Tightening torque.....	26
Accessories.....	28
Hoses and couplings.....	28
Kits.....	29
Seal kit.....	29
Wiring diagram.....	30

General information

This spare parts list applies to the following:

Part number	Description
1807 0080 44	LP 9-20 P PAC (EU approved)
1807 0080 45	LP 9-20 P PAC (Not EU approved)
1807 0080 46	LP 9-20 E PAC

Use only authorized parts. Any damage or malfunction caused by the use of unauthorized parts is not covered by Warranty or Product Liability. Any unauthorized use or copying of the contents or any part thereof is prohibited. This applies in particular to trademarks, model denominations, part numbers, and drawings.

Instructions for use

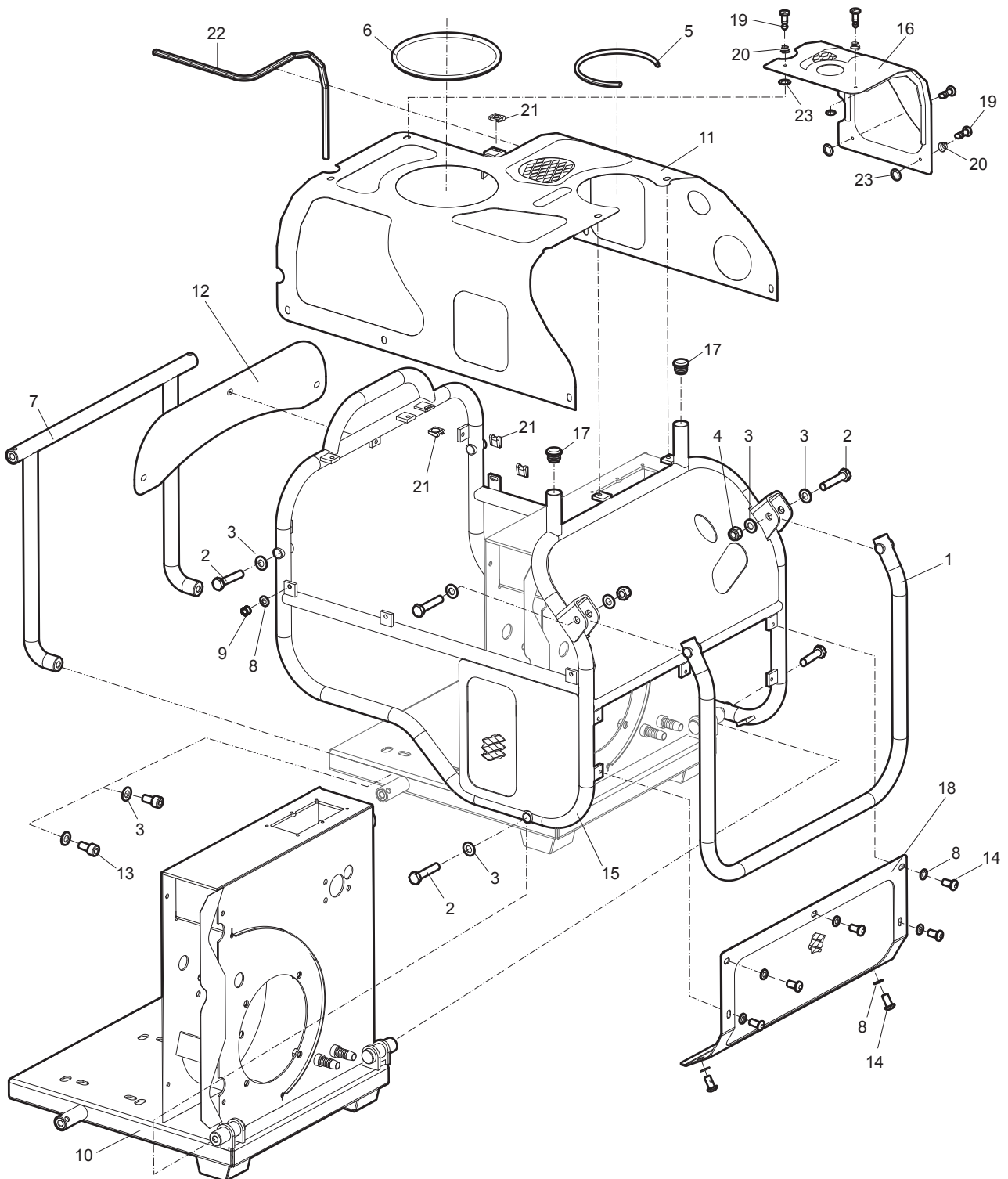
This spare parts list contains no safety regulations and is merely intended to assist in the ordering of spare parts.

For information about operating, servicing, or repairing, the relevant Safety and operating instructions must be consulted at all costs.

Please observe the safety instructions listed in the relevant Safety and operating instructions!

Spare parts list

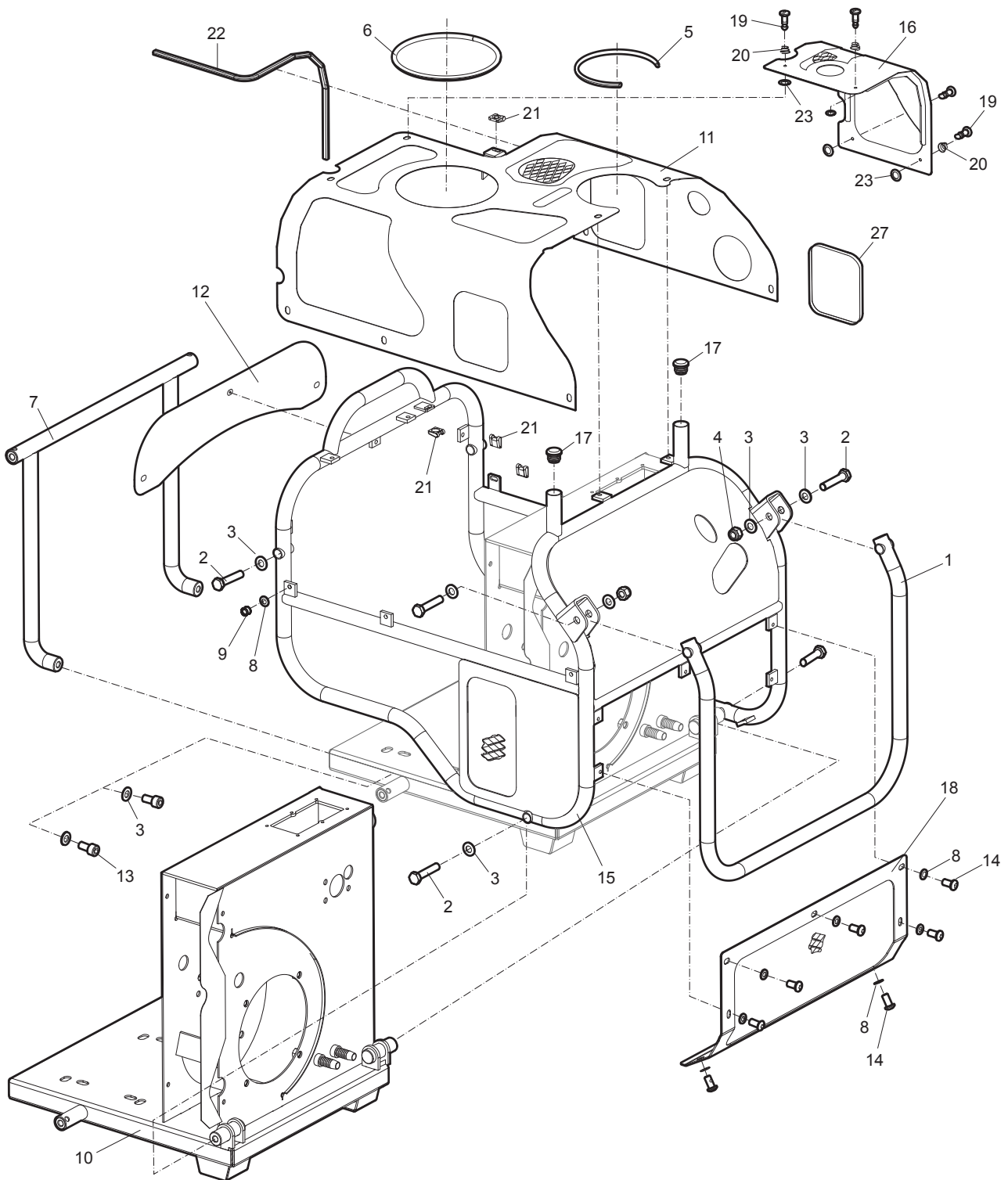
Frame and cowl LP 9-20 P PAC



No.	Description	Remark	Quantity	Part number
1	Handle		1	3377 0214 41
2	Screw	M10 x 50 mm, Use LOCTITE® 243™	6	3377 1200 10
3	Washer	Ø10 mm Ø0.39 in.	10	3377 1000 10
4	Nut	M10	2	3371 8067 02
5	Edge trim	Length = 276 mm Length = 10.87 in.	1	3377 0214 43
6	Edge trim	Length = 480 mm Length = 18.90 in.	1	3377 0214 42
7	Rear frame		1	3377 0214 61
8	Washer	Ø5 mm Ø0.20 in.	8	3377 0004 58
9	Rivet	Ø4.8 mm Ø0.19 in.	8	3377 0218 13
10	Tank chassis		1	3377 0214 29
11	Cowl		1	3377 0214 28
12	Rear plate		1	3377 0214 62
13	Screw	M10 x 20 mm, Use LOCTITE® 243™	2	3378 3025 12
14	Socket head screw	M6 x 12 mm	7	3377 1232 06
15	Frame		1	3377 0214 40
16	Cover of air filter		1	3377 0214 69
17	Cap		2	3371 8055 07
18	Front panel		1	3377 0214 70
19	Stud		4	3377 0218 18
20	Spring		3	3377 0218 20
21	Receptacle		4	3377 0218 17
22	Edge trim	Length = 510 mm Length = 20.08 in.	1	3377 0214 71
23	Washer		4	3377 0218 19

LOCTITE is a registered trademark of Henkel Corporation. 243 is a trademark of Henkel Corporation.

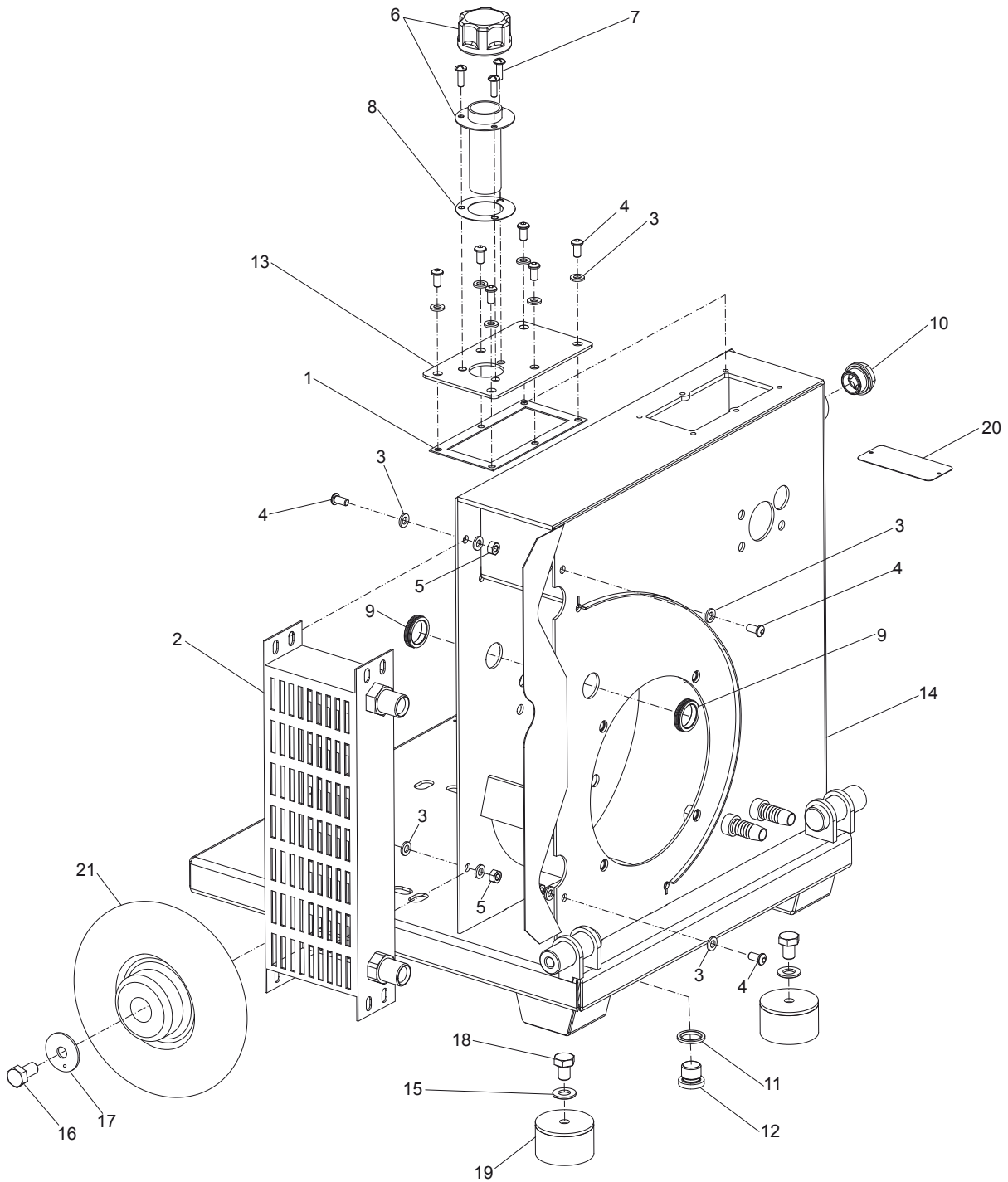
Frame and cowl LP 9-20 E PAC



No.	Description	Remark	Quantity	Part number
1	Handle		1	3377 0214 41
2	Screw	M10 x 50 mm, Use LOCTITE® 243™	6	3377 1200 10
3	Washer	Ø10 mm Ø0.39 in.	10	3377 1000 10
4	Nut	M10	2	3371 8067 02
5	Edge trim	Length = 276 mm Length = 10.87 in.	1	3377 0214 43
6	Edge trim	Length = 480 mm Length = 18.90 in.	1	3377 0214 42
7	Rear frame		1	3377 0214 61
8	Washer	Ø5 mm Ø0.20 in.	8	3377 0004 58
9	Rivet	Ø4.8 mm Ø0.19 in.	8	3377 0218 13
10	Tank chassis		1	3377 0214 29
11	Cowl		1	3377 0214 28
12	Rear plate		1	3377 0214 62
13	Screw	M10 x 20 mm, Use LOCTITE® 243™	2	3378 3025 12
14	Socket head screw	M6 x 12 mm	7	3377 1232 06
15	Frame		1	3377 0214 40
16	Cover of air filter		1	3377 0214 69
17	Cap		2	3371 8055 07
18	Front panel		1	3377 0214 70
19	Stud		4	3377 0218 18
20	Spring		3	3377 0218 20
21	Receptacle		4	3377 0218 17
22	Edge trim	Length = 510 mm Length = 20.08 in.	1	3377 0214 71
23	Washer		4	3377 0218 19
27	Edge trim	Length = 405 mm Length = 15.95 in.	1	3377 0214 46

LOCTITE is a registered trademark of Henkel Corporation. 243 is a trademark of Henkel Corporation.

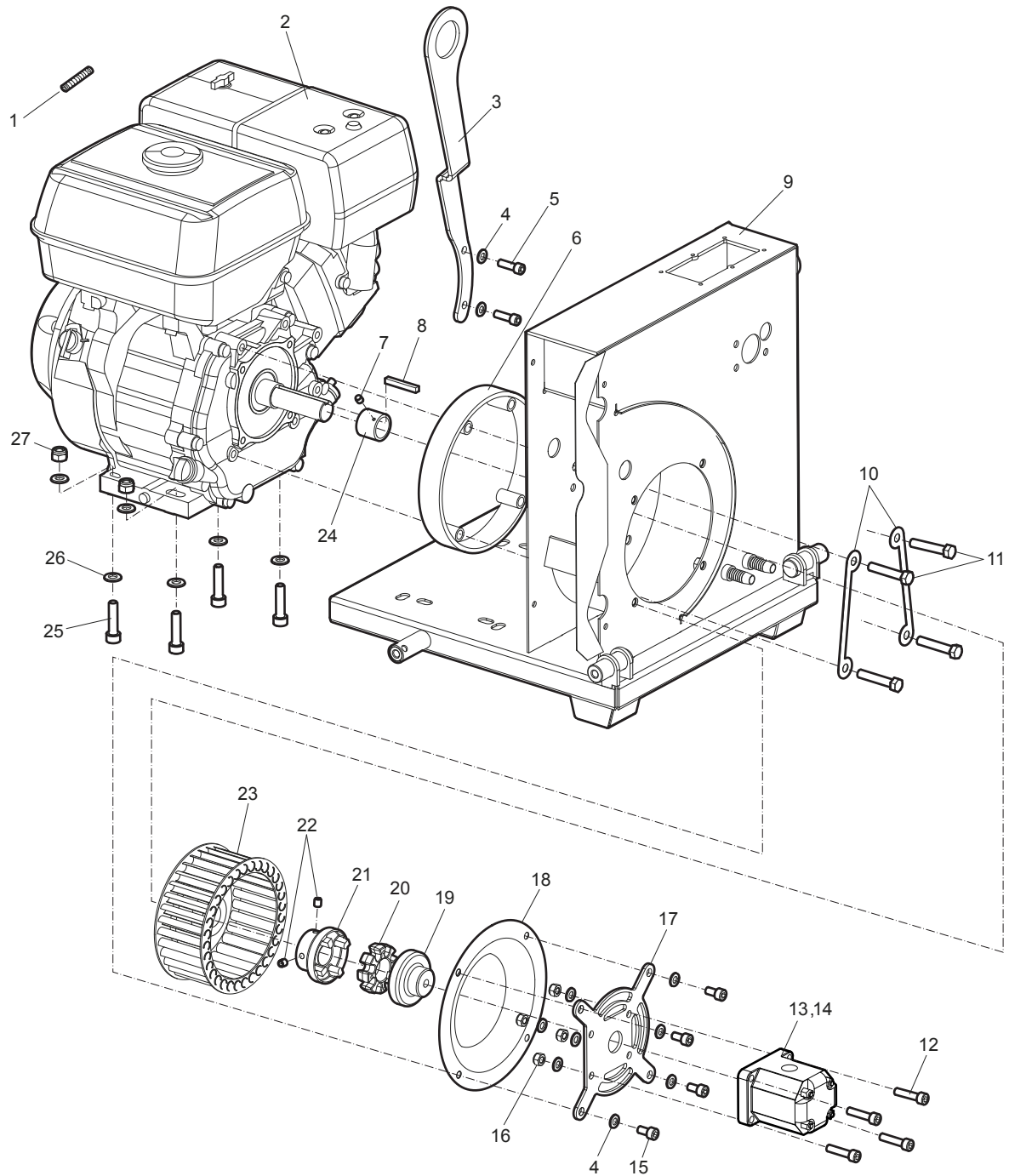
Tank and chassi



No.	Description	Remark	Quantity	Part number
1	Seal		1	3377 0000 69
2	Oil cooler		1	3377 0050 68
3	Washer	Ø6 mm Ø0.24 in.	14	3377 0004 07
4	Screw	M6 x 12 mm, Use LOCTITE® 243™	10	3377 1232 06
5	Nut	M6	4	3377 1100 06
6	Filler cap		1	3377 0052 59
7	Screw	M5 x 16 mm	3	3377 0004 01
8	Seal		1	3377 0004 03
9	Rubber grommet		2	3377 0050 87
10	Sight glass		1	3377 0050 72
11	Seal ring	¾ in.	1	3377 0163 75
12	Fitting 06		1	3371 8037 07
13	Cover		1	3377 0214 66
14	Tank chassis		1	3377 0214 29
15	Washer	Ø10 mm Ø0.39 in.	2	3377 1000 10
16	Screw	M10 x 14 mm, Use LOCTITE® 243™	2	3377 0004 06
17	Washer	Ø¾ in.	2	3377 1040 10
18	Screw	M10 x 14 mm, Use LOCTITE® 243™	2	3377 0004 06
19	Rubber foot		2	3377 0004 05
20	Data plate		1	-
21	Wheel	To ensure interchange ability this position must always be ordered in pairs, (always order 2 off pieces).	2	3377 0214 63

LOCTITE is a registered trademark of Henkel Corporation. 243 are trademarks of Henkel Corporation.

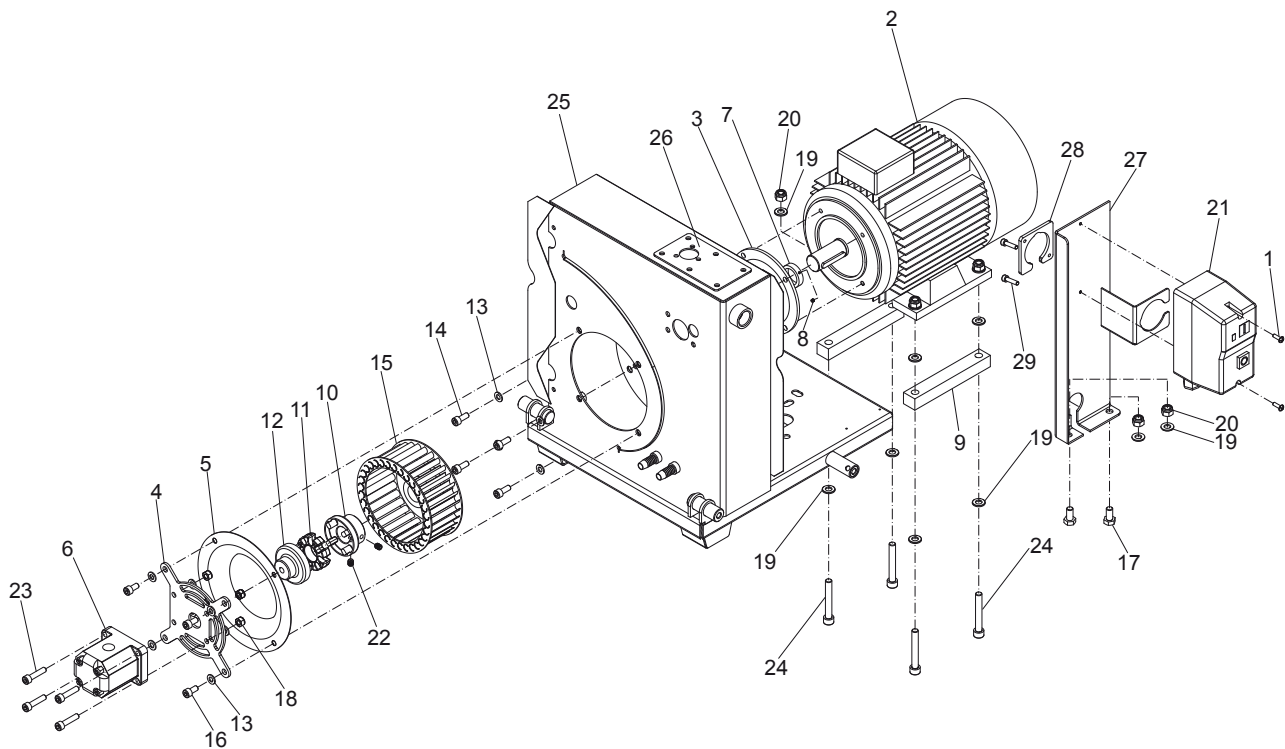
Engine and pump LP 9-20 P PAC



No.	Description	Remark	Quantity	Part number
1	Spring		1	3377 0004 14
2	Engine	Honda GX270QXB7	1	3377 0004 09
3	Lifting eye		1	3377 0214 68
4	Washer	Ø 8 mm Ø0.32 in.	10	3377 0005 03
5	Screw	UNC 5/16 in. x 25 mm	2	3377 5007 16
6	Spacer ring		1	3377 0004 08
7	Stop screw	M4 x 4 mm	1	3377 0004 13
8	Parallel key	6.3 x 6.3 x 45 mm 0.25 x 0.25 x 1.77 in.	1	3377 0005 68
9	Tank chassis		1	3377 0214 29
10	Lock plate		2	3377 0007 92
11	Screw	UNC 3/8 in. x 51 mm, Use LOCTITE® 243™	4	3377 0004 10
12	Screw	M8 x 35 mm, Use LOCTITE® 243™	4	3377 0004 77
13	Pump	7.0 cc, For EU approved power packs	1	3377 0004 88
14	Pump	6.1 cc, For not EU approved power packs	1	3377 0217 06
15	Screw	M8 x 16 mm, Use LOCTITE® 243™	4	3377 1215 08
16	Nut	M8	4	3377 1110 08
17	Pump plate		1	3377 0033 87
18	Fan inlet ring		1	3377 0014 38
19	Pump half coupling		1	3377 0051 70
20	Coupling spider		1	3377 0051 69
21	Engine half coupling		1	3377 0051 68
22	Screw	M8 x 10 mm	2	3377 0004 15
23	Fan inlet ring		1	3377 0025 81
24	Spacer		1	3377 0000 30
25	Screw	M10 x 40 mm, Use LOCTITE® 243™	4	3377 1210 10
26	Washer	Ø10 mm Ø0.39 in.	8	3377 1000 10
27	Nut	M10	4	3371 8067 02

LOCTITE is a registered trademark of Henkel Corporation. 243 is a trademark of Henkel Corporation.

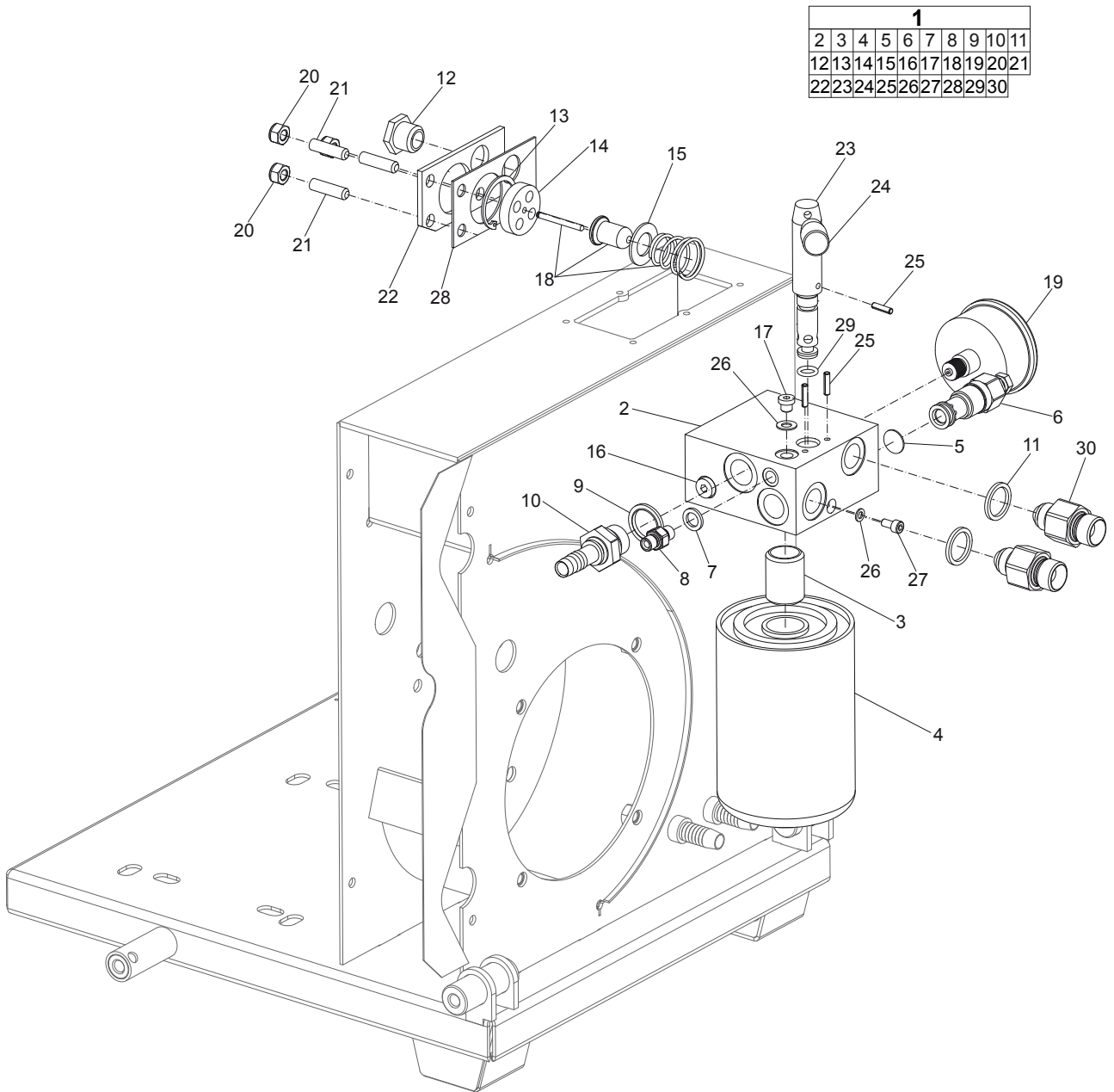
Engine and pump LP 9-20 E PAC



No.	Description	Remark	Quantity	Part number
1	Screw	M5 x 16 mm	2	3377 0004 01
2	Electric motor	5.5 kW - 380 V	1	3378 0013 04
3	Spacer ring		1	3377 0005 74
4	Pump plate		1	3377 0033 87
5	Fan inlet ring		1	3377 0014 38
6	Pump	7.9 cc	1	3377 0005 81
7	Distance bushing		1	3377 0005 82
8	Stop screw	M4 x 4 mm	1	3377 0004 13
9	Distance plate		2	3377 0214 44
10	Engine half coupling		1	3377 0005 75
11	Coupling spider		1	3377 0051 69
12	Pump half coupling		1	3377 0051 70
13	Washer	Ø8 mm Ø0.31 in.	12	3377 0004 69
14	Screw	M8 x 20 mm	4	3371 8207 21
15	Fan		1	3377 0005 73
16	Screw	M8 x 16 mm, Use LOCTITE® 243™	4	3377 1215 08
17	Screw	M10 x 20 mm	2	3371 8157 22
18	Nut	M8	4	3377 1110 08
19	Washer	Ø10 mm Ø0.39 in.	10	3377 1000 10
20	Nut	M10	6	3371 8067 02
21	Electric box, complete	Including coupling and cables	1	3377 0007 93
22	Screw	M8 x 10 mm	2	3377 0004 15
23	Screw	M8 x 35 mm, Use LOCTITE® 243™	4	3377 0004 77
24	Screw	M10 x 70 mm, Use LOCTITE® 243™	4	3377 0004 36
25	Tank chassis, complete		1	3377 0214 29
26	Cover		1	3377 0214 66
27	Plate, electric box		1	3377 0214 45
28	Plug bracket		1	3377 0213 34
29	Screw	M6 x 25 mm	2	3377 5007 19

LOCTITE is a registered trademark of Henkel Corporation. 243 is a trademark of Henkel Corporation.

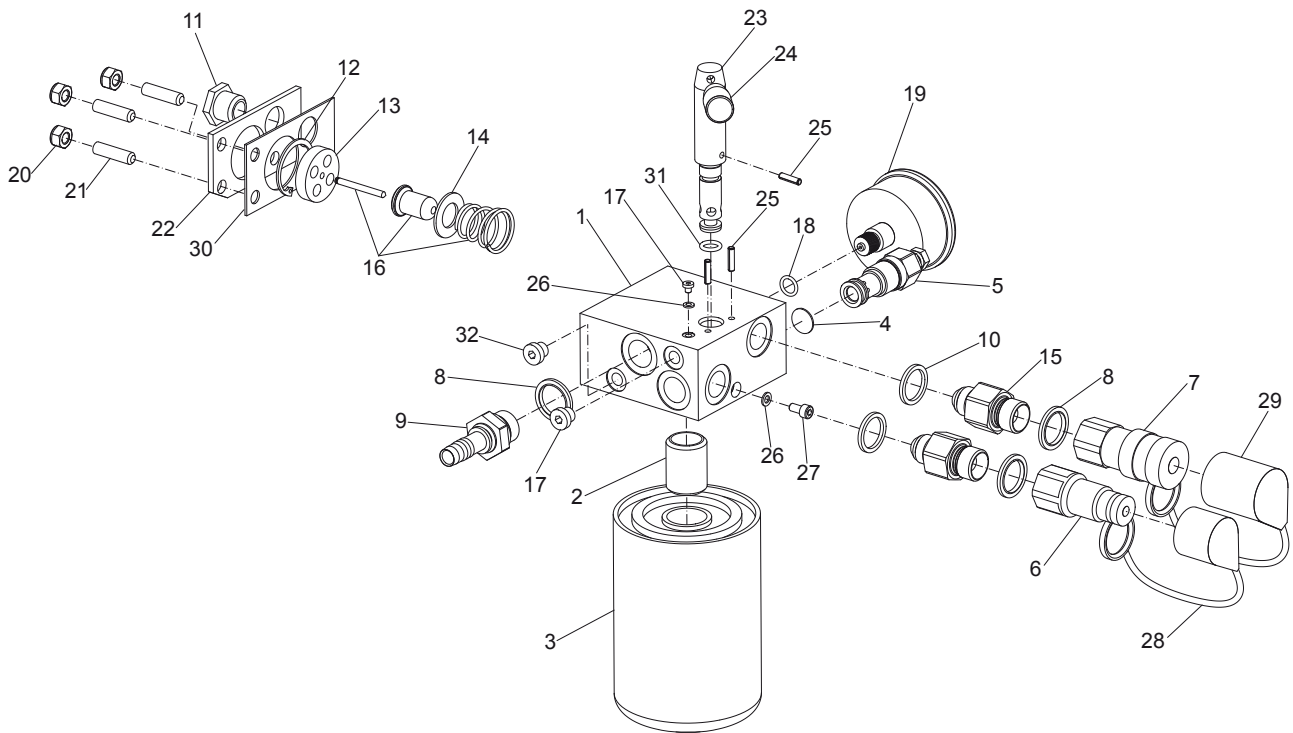
Valve block LP 9-20 P PAC



No.	Description	Remark	Quantity	Part number
1(2-30)	Valve block, complete		1	3377 0210 77
2	Valve block		1	3377 0214 14
3	Filter adaptor	Use LOCTITE® 243™	1	3377 0052 63
4	Oil filter	25 Micron	1	3377 0050 75
5	Filter washer		1	3377 0005 88
6	Pressure relief valve		1	3377 0051 72
7	Seal ring	Bonded seal ½ in. BSP	1	3377 0161 25
8	Adaptor 02-02	BSP Male, Use LOCTITE® 243™	1	3377 0004 17
9	Seal ring	Bonded seal ½ in. BSP	1	3371 8057 14
10	Hose fitting	½ in. Hose barb - ½ in. BSP Male	1	3377 0004 33
11	Seal ring	Bonded seal ¾ in. UNF	2	3377 0160 19
12	By-pass valve		1	3377 0047 47
13	Locking ring	Ø36 x 1.5 mm Ø1.42 x 0.06 in.	1	3377 0051 28
14	Thermostat end cap		1	3377 0040 84
15	Washer	5/8 in.	1	3377 1000 16
16	Plug	Rc ¼ in.	1	3371 8131 41
17	Screw	M5, Use LOCTITE® 243™	1	3377 0004 14
18	Thermostat, complete		1	3377 0050 82
19	Filter gauge, complete		1	3377 0050 67
20	Nut	M8	3	3377 1110 08
21	Screw	M8 x 30 mm	3	3377 1220 08
22	Clamp plate		1	3377 0040 50
23	Spool		1	3377 0007 44
24	Handle	M6, Use LOCTITE® 243™	1	3377 0004 59
25	Roll pin	Ø4 x 16 mm Ø0.16 x 0.63 in.	3	3377 0136 04
26	Seal ring	Ø5/Ø9 x 1 mm Ø0.20/Ø0.35 x 0.04 in.	2	3377 0051 13
27	Screw	M5 x 10 mm, Use LOCTITE® 243™	1	3377 1210 05
28	Seal		1	3377 0040 51
29	O-ring	Ø9.6 x 2.4 mm Ø0.38 x 0.09 in.	1	3377 0004 16
30	Adaptor	¾ in. UNF - ½ in. BSP, Use LOCTITE® 243™	2	3377 0214 64

LOCTITE is a registered trademark of Henkel Corporation. 243 is a trademark of Henkel Corporation.

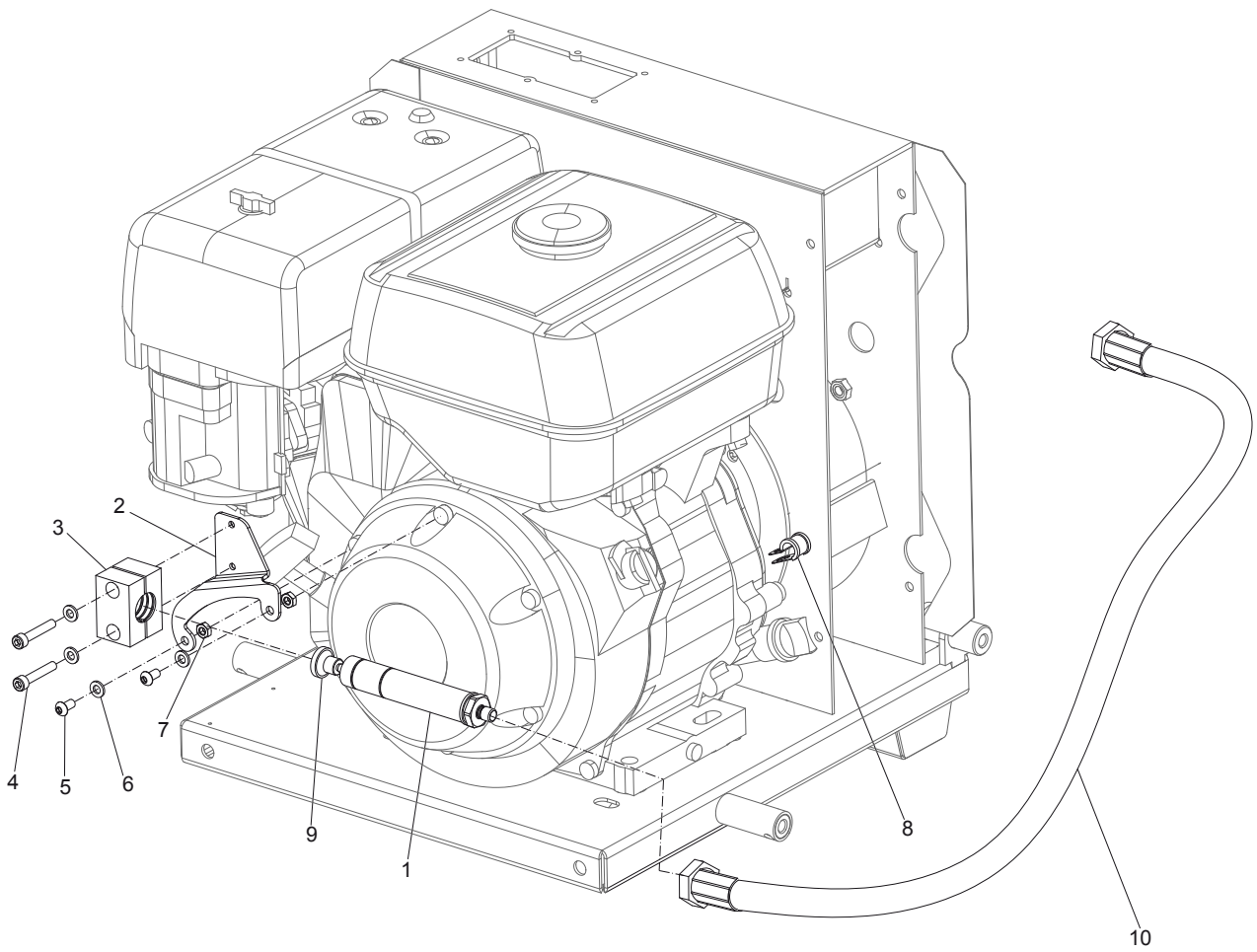
Valve block LP 9-20 E PAC



No.	Description	Remark	Quantity	Part number
1	Valve block		1	3377 0214 14
2	Filter adaptor	Use LOCTITE® 243™	1	3377 0052 63
3	Oil filter	25 Micron	1	3377 0050 75
4	Filter washer		1	3377 0005 88
5	Pressure relief valve		1	3377 0051 72
6	Quick release coupling	½ in. Flat-face Male	1	3371 8051 34
7	Quick release coupling	½ in. Flat-face Female	1	3371 8051 33
8	Seal ring	Bonded seal ½ in. BSP	3	3371 8057 14
9	Hose fitting	½ in. Hose barb - ½ in. BSP Male	1	3377 0004 33
10	Seal ring	Bonded seal ¾ in. UNF	2	3377 0160 19
11	By-pass valve		1	3377 0047 47
12	Locking ring	Ø36 x 1.5 mm Ø1.42 x 0.06 in.	1	3377 0051 28
13	Thermostat end cap		1	3377 0040 84
14	Washer	⅝ in.	1	3377 1000 16
15	Adaptor	¾ in. UNF - ½ in. BSP, Use LOCTITE® 243™	2	3377 0214 64
16	Thermostat, complete		1	3377 0050 82
17	Fitting 02 with seal	Use LOCTITE® 243™	2	3371 8177 40
18	O-ring	Ø10 x 2 mm Ø0.39 x 0.08 in.	1	3376 1000 08
19	Filter gauge, complete		1	3377 0050 67
20	Nut	M8	3	3377 1110 08
21	Screw	M8 x 30 mm	3	3377 1220 08
22	Clamp plate		1	3377 0040 50
23	Spool		1	3377 0007 44
24	Handle	M6, Use LOCTITE® 243™	1	3377 0004 59
25	Roll pin	Ø4 x 16 mm Ø0.16 x 0.63 in.	3	3377 0136 04
26	Seal ring	Ø5/Ø9 x 1 mm Ø0.20/Ø0.35 x 0.04 in.	2	3377 0051 13
27	Screw	M5 x 10 mm, Use LOCTITE® 243™	1	3377 1210 05
28	Protective cap	For - ½ in. Male QRC	1	3371 8057 32
29	Protective cap	For - ½ in. Female QRC	1	3371 8057 33
30	Seal		1	3377 0040 51
31	O-ring	Ø9.6 x 2.4 mm Ø0.38 x 0.09 in.	1	3377 0004 16
32	Fitting	02 KRG	1	3371 8147 33

LOCTITE is a registered trademark of Henkel Corporation. 243 is a trademark of Henkel Corporation.

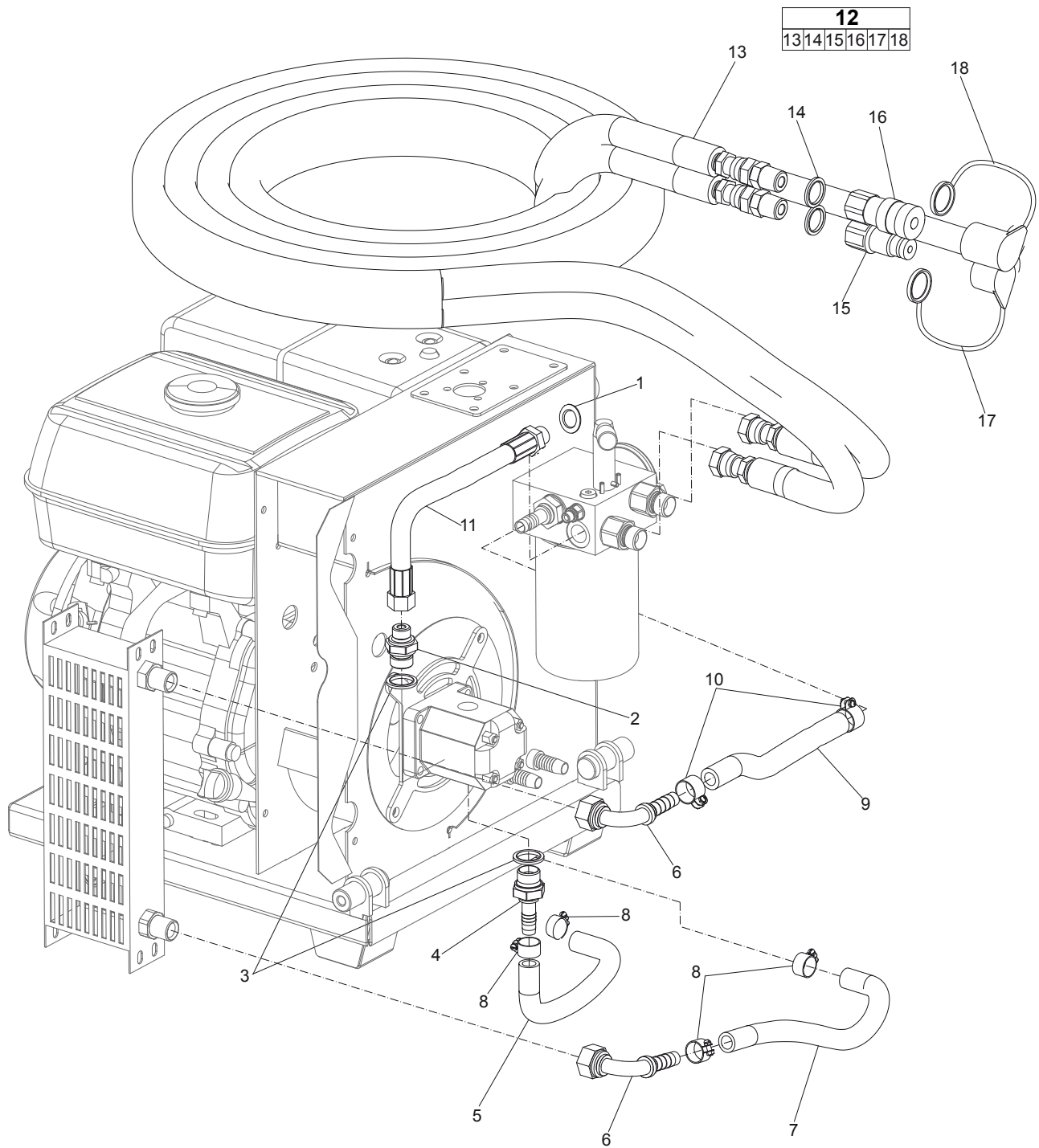
Cylinder LP 9-20 P PAC



No.	Description	Remark	Quantity	Part number
1	Cylinder	POD, complete	1	3377 0047 74
2	Bracket	POD	1	3377 0002 05
3	Pipe holder		1	3377 0004 25
4	Screw	M6 x 35 mm, Use LOCTITE® 243™	2	3377 0004 22
5	Screw	M6 x 12 mm, Use LOCTITE® 243™	2	3377 1232 06
6	Washer	Ø12/Ø6.5 x 1.5 mm (steel) Ø0.47/Ø0.26 x 0.06 in. (steel)	4	3377 0004 07
7	Nut	M6	2	3377 0004 23
8	Hose clip	For POD hose	1	3377 0057 11
9	Knob	For POD cylinder	1	3377 0057 30
10	Hose		1	3377 0506 94

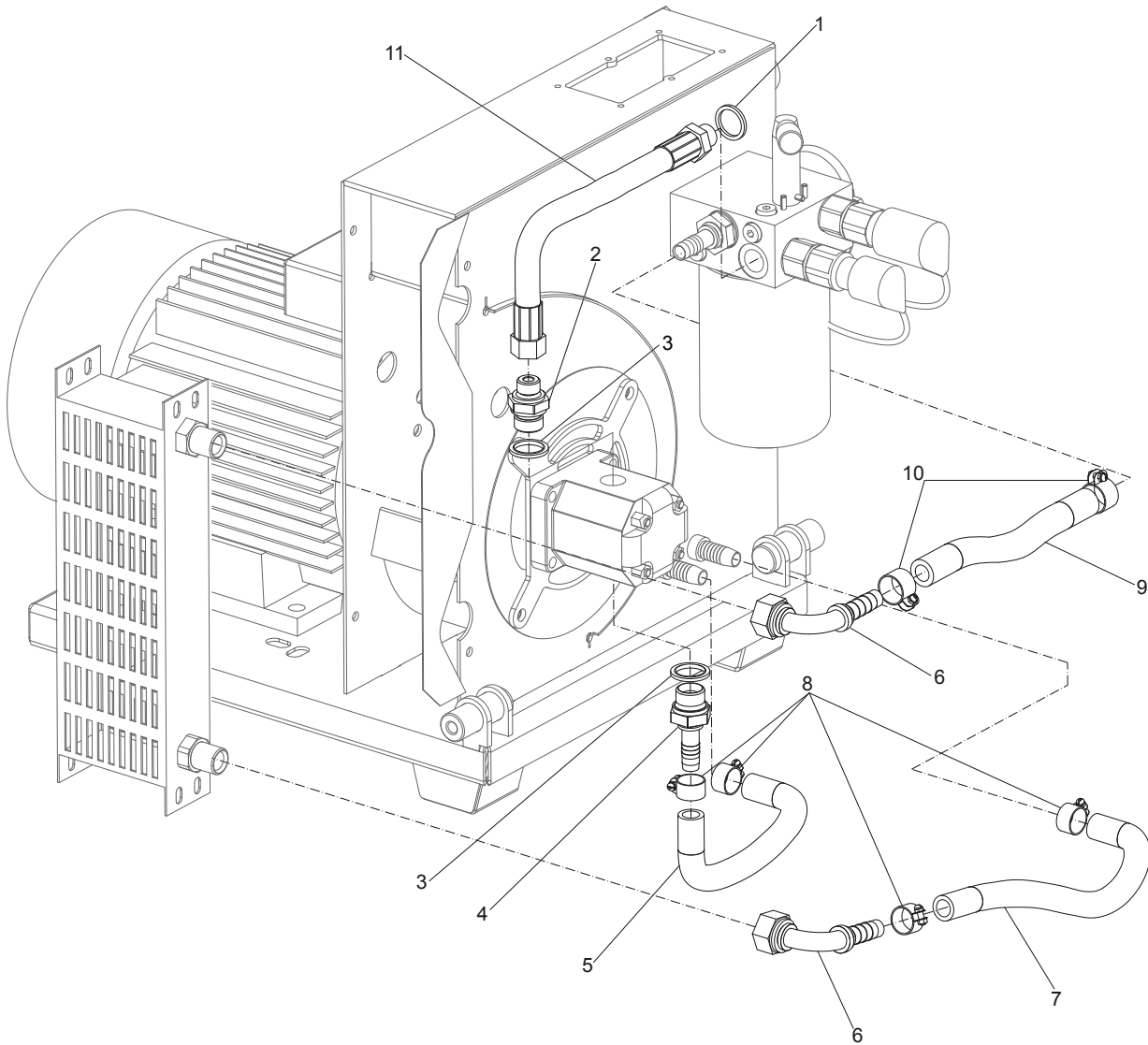
LOCTITE is a registered trademark of Henkel Corporation. 243 is a trademark of Henkel Corporation.

Hoses and fittings LP 9-20 P PAC



No.	Description	Remark	Quantity	Part number
1	Seal ring	Bonded seal ¼ in. UNF	1	3377 0160 19
2	Adaptor 08-06	BSP Male - BSP Male	1	3377 0004 32
3	Seal ring	Bonded seal ½ in. BSP	2	3371 8057 14
4	Hose fitting	½ in. Hose barb - ½ in. BSP Male	1	3377 0004 33
5	Suction hose	Length = 185 mm Length = 3.35 in.	1	3377 0004 30
6	Elbow hose fitting	½ in. Hose barb - ½ in. BSP Male	2	3377 0004 27
7	Cooler return line		1	3377 0004 26
8	Hose clip	Ø19/12 mm Ø0.75/0.47 in.	4	3377 0007 89
9	Cooler feed line		1	3377 0004 29
10	Hose clip	Ø21/15 mm Ø0.83/0.59 in.	2	3377 0007 90
11	High pressure hose		1	3377 0214 65
12(13-18)	Twin hose, complete	Ø12.5 mm Length = 7 m Ø½ in. Length = 23 ft	1	3371 8010 82
13	Twin hose	Ø12.5 mm Length = 7 m, BSP Male - BSP Female Ø½ in. Length = 23 ft	1	3371 8030 55
14	Seal ring	Bonded seal ½ in. BSP	2	3371 8057 14
15	Quick release coupling	½ in. Flat-face Male	1	3371 8051 34
16	Quick release coupling	½ in. Flat-face Female	1	3371 8051 33
17	Protective cap	For ½ in. Male QRC	1	3371 8057 32
18	Protective cap	For ½ in. Female QRC	1	3371 8057 33

Hoses and fittings LP 9-20 E PAC



No.	Description	Remark	Quantity	Part number
1	Seal ring	Bonded seal ¼ in. UNF	1	3377 0160 19
2	Adaptor 08-06	BSP Male - BSP Male	1	3377 0004 32
3	Seal ring	Bonded seal ½ in. BSP	2	3371 8057 14
4	Hose fitting	½ in. Hose barb - ½ in. BSP Male	1	3377 0004 33
5	Suction hose	Length = 185 mm Length = 3.35 in.	1	3377 0004 30
6	Elbow hose fitting	½ in. Hose barb - ½ in. BSP Male	2	3377 0004 27
7	Cooler return line		1	3377 0004 26
8	Hose clip	Ø19/12 mm Ø0.75/0.47 in.	4	3377 0007 89
9	Cooler feed line		1	3377 0004 29
10	Hose clip	Ø21/15 mm Ø0.83/0.59 in.	2	3377 0007 90
11	High pressure hose		1	3377 0214 65

Tightening torque

Description	Tightening torque (Nm)	Remark	Part number
Screw	40	M10 x 50 mm, Use LOCTITE® 243™	3377 1200 10
Screw	40	M10 x 20 mm, Use LOCTITE® 243™	3378 3025 12
Screw	6	M5 x 16 mm	3377 0004 01
Screw	6	M6 x 12 mm, Use LOCTITE® 243™	3377 1232 06
Sight glass	20		3377 0050 72
Screw	40	M10 x 14 mm, Use LOCTITE® 243™	3377 0004 06
Fitting 06	60		3371 8037 07
Screw	30	M10 x 14 mm, Use LOCTITE® 243™	3377 0004 06
Screw	28	M8 x 35 mm, Use LOCTITE® 243™	3377 0004 77
Screw	28	M8 x 16 mm, Use LOCTITE® 243™	3377 1215 08
Screw	15	M8 x 10 mm	3377 0004 15
Screw	47	UNC 3/8 in. x 51 mm, Use LOCTITE® 243™	3377 0004 10
Screw	15	M10 x 40 mm, Use LOCTITE® 243™	3377 1210 10
Screw	47	M8 x 20 mm	3371 8207 21
Screw	15	M10 x 70 mm, Use LOCTITE® 243™	3377 0004 36
Screw	15	M10 x 20 mm	3371 8157 22
Screw	5	M6 x 25 mm	3377 5007 19
Stop screw	5	M4 x 4 mm	3377 0004 13
Screw	5	M5 x 16 mm	3377 0004 01
Adaptor	30	3/4 in. UNF - 1/2 in. BSP, Use LOCTITE® 243™	3377 0214 64
Screw	5	M5 x 10 mm, Use LOCTITE® 243™	3377 1210 05
Pressure relief valve	30		3377 0051 72
Filter gauge, complete	5		3377 0050 67
Adaptor 02-02	10	BSP Male, Use LOCTITE® 243™	3377 0004 17
Hose fitting	30	1/2 in. Hose barb - 1/2 in. BSP Male	3377 0004 33
Screw	5	M5, Use LOCTITE® 243™	3377 0004 14
Handle	5	M6, Use LOCTITE® 243™	3377 0004 59
Plug	5	Rc 1/4 in.	3371 8131 41
Nut	10	M8	3377 1110 08
By-pass valve	30		3377 0047 47
Fitting 02 with seal	5	Use LOCTITE® 243™	3371 8177 40
Quick release coupling	60	1/2 in. Flat-face Male	3371 8051 34
Quick release coupling	60	1/2 in. Flat-face Female	3371 8051 33
Screw	5	M6 x 35 mm, Use LOCTITE® 243™	3377 0004 22
Nut	5	M6	3377 0004 23
Hose	15		3377 0506 94
Adaptor 08-06	30	BSP Male - BSP Male	3377 0004 32
High pressure hose	25		3377 0214 65
Hose clip	5	Ø21/15 mm Ø0.83/0.59 in.	3377 0007 90

Description	Tightening torque (Nm)	Remark	Part number
Hose clip	5	Ø19/12 mm Ø0.75/0.47 in.	3377 0007 89
Elbow hose fitting	30	½ in. Hose barb - ½ in. BSP Male	3377 0004 27
Hose fitting	30	½ in. Hose barb - ½ in. BSP Male	3377 0004 33
Twin hose	45	Ø12.5 mm Length = 7 m, BSP Male - BSP Female Ø½ in. Length = 23 ft	3371 8030 55

LOCTITE is a registered trademark of Henkel Corporation. 243 is a trademark of Henkel Corporation.

Accessories

Hoses and couplings

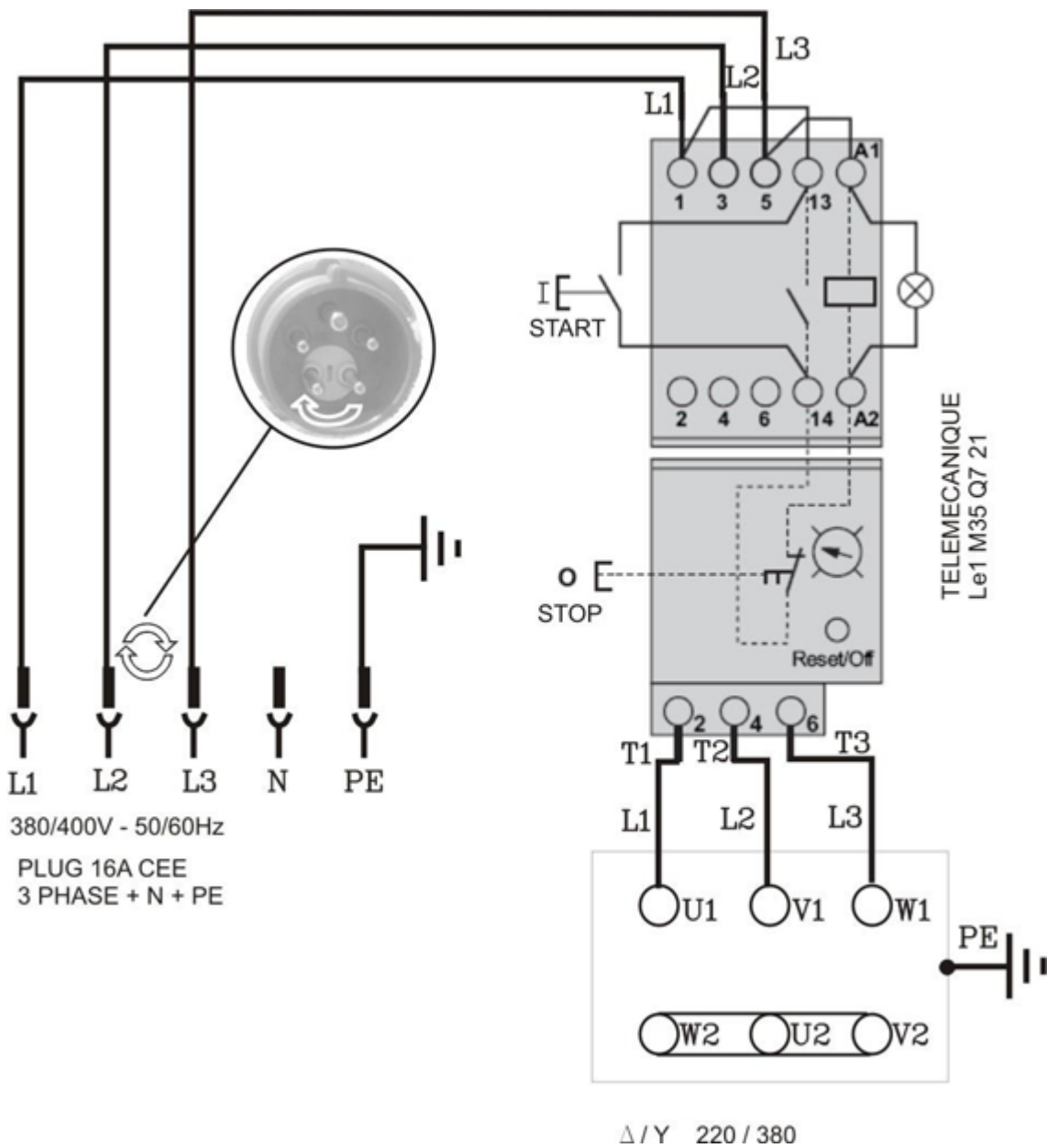
Description	Remark	Quantity	Part number
Twin hose, complete	Ø ½ in. Length = 276 in. Ø 12.5 mm Length = 7 m	1	3371 8010 87
Seal ring	Bonded seal ½ in. BSP	4	3371 8057 14
Quick-release coupling	Female ½ in. BSP	2	3371 8051 33
Quick-release coupling	Male ½ in. BSP	2	3371 8051 34
Protective cap	Female	2	3371 8057 33
Protective cap	Male	2	3371 8057 32
Twin hose	Ø ½ in. Length = 276 in. Ø 12.5 mm Length = 7 m	1	3371 8030 52
Test equipment		1	3371 8011 54

Kits

Seal kit

Description	Remark	Quantity	Part number
Seal kit	For POD cylinder	1	3377 0001 21
Bonded seal		1	3377 0161 29
O-ring	Ø5 x 1.5 mm Ø0.20 x 0.06 in.	1	3371 8177 17
Bonded seal		1	3377 0163 75
Seal	Ø6/Ø13 x 5 mm Ø0.24/Ø0.51 x 0.20 in.	4	3377 0007 30
Seal	Ø6/Ø13 x 3 mm Ø0.24/Ø0.51 x 0.12 in.	1	3377 0007 32
Locking ring		1	3377 0007 33

Wiring diagram



Any unauthorized use or copying of the contents or any part thereof is prohibited.
This applies in particular to trademarks, model denominations, part numbers, and
drawings.

© 2012 Atlas Copco Construction Tools AB | No. 3392 5225 01a | 2012-09-03

Atlas Copco

www.atlascopco.com